



Centre for Research in  
Schemes and Policies

# **Meghalaya Transformation in School Education Action Plan**

**Date: 24-April-2023**

# Meghalaya Performance & Ranking

## SDGs

- 23<sup>rd</sup> Rank, composite score 60, Performer State
- SDG No.4, Quality of Education index reduced from 55 to 48 score – long way
- Dropout rate high - 7.4% at Primary, 10.64 U.P & 27.9% at Secondary level

## SEQI

- Niti Ayog, Ranked 48
- Aspirant State
- School Infra - lowest in then country

## PGI

- Ministry of Education
- Grade 3 with 761/1000 points
- Lowest ranking in infrastructure – 6.58

## SEQI

Category/Domain	Edu. Index Reference year
Overall	39.08
Outcomes	39.25
Learning outcomes	38.28
Access outcomes	43.12
Infrastructure and facilities for outcomes	6.58
Equity outcomes	43.13
Governance processes	38.69
Governance processes aiding outcomes	38.69

✓ **GER** - Primary: 187.19; U.P: 113.3; Secondary:85.07; H.S: 45.92

✓ **PTR** - State Average: 21; Primary: 20, Upper Primary: 14, Secondary: 12, Higher Secondary: 20



# 1. Strengthen Governance and Organisational restructuring for effective planning and administration in the school education department.

1. Reorganising, restructuring and institutional capacity building

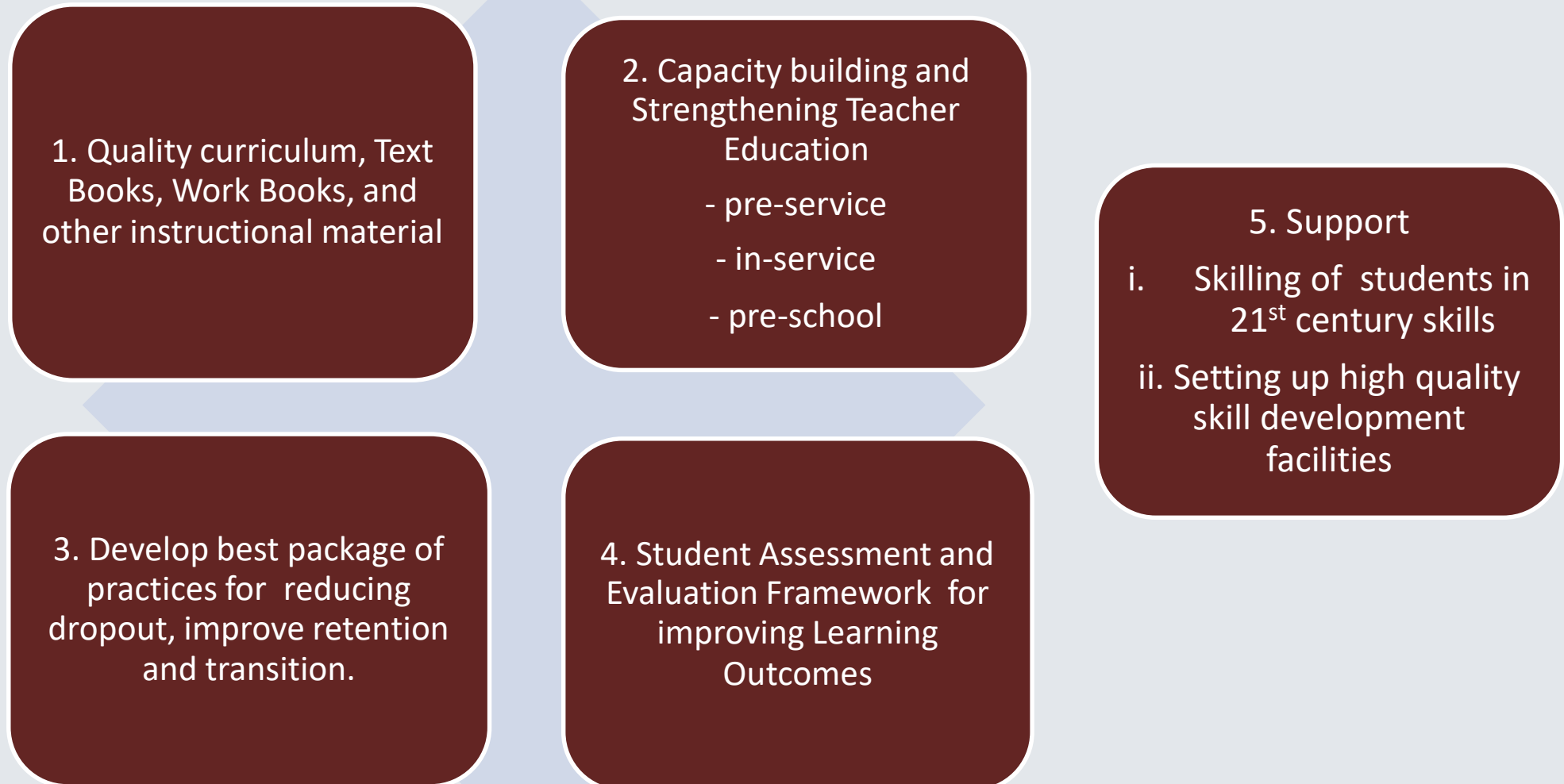
2. Rationalisation and Consolidation of Schools and efficient teacher deployment;

3. Efficient Decentralisation and Delegation  
- Empowering District Collectors and Village Councils

4. Integrating pre-primary education with lower primary;

5. Strengthen Science Education at Secondary and Higher Secondary level

## 2. School Education Quality Improvement Program (SEQIP) to enhance student learning levels

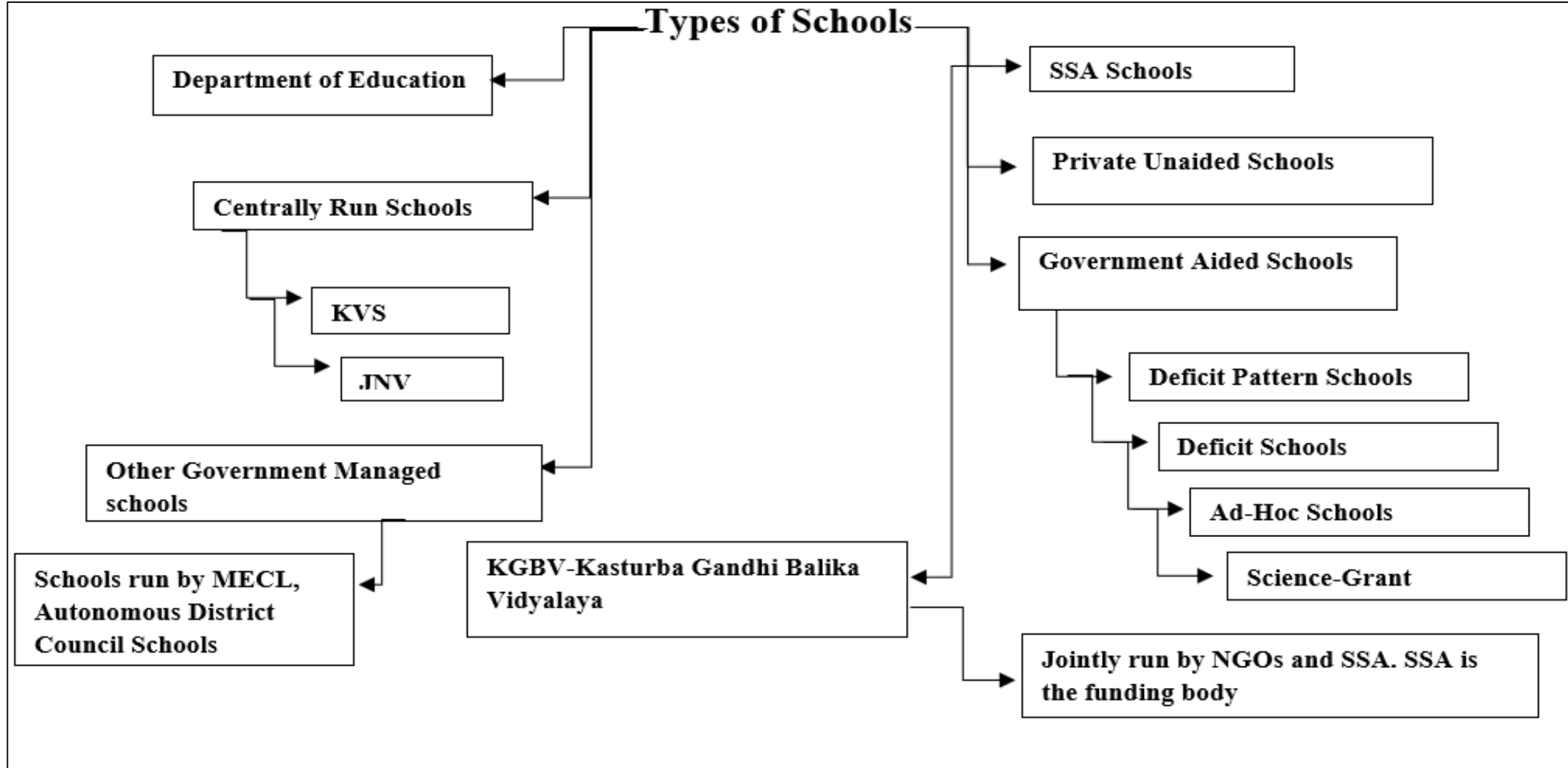


**Technology as an enabler for Quality Teaching & Learning and Effective Administration**

## School, Enrolment and Teacher by Management type- Meghalaya

Management type	Total School	Total Teacher	Total Student
Dept. Of Education	2615	7428	183414
Deficit School	278	2829	65683
Deficit Pattern	12	90	1201
Adhoc	1808	8881	161211
SSA	5135	14930	281920
Non Govt.	1867	4901	142330
KGBV	10	73	472
Science Grant	138	742	9122
Govt. aided	69	215	5309
Pvt. Unaided (Recognized)	2120	12209	265667
Other Govt. Managed schools	5	118	2335
Unrecognized	525	2392	41965
Kendra Vidyalaya Sangathan	7	184	5051
Jawahar Navodaya Vidhyalaya	11	168	4040
<b>Grand Total</b>	<b>14600</b>	<b>55160</b>	<b>1169720</b>

## Multiple Categories of Schools & Managements



## Policy & Operational Interventions



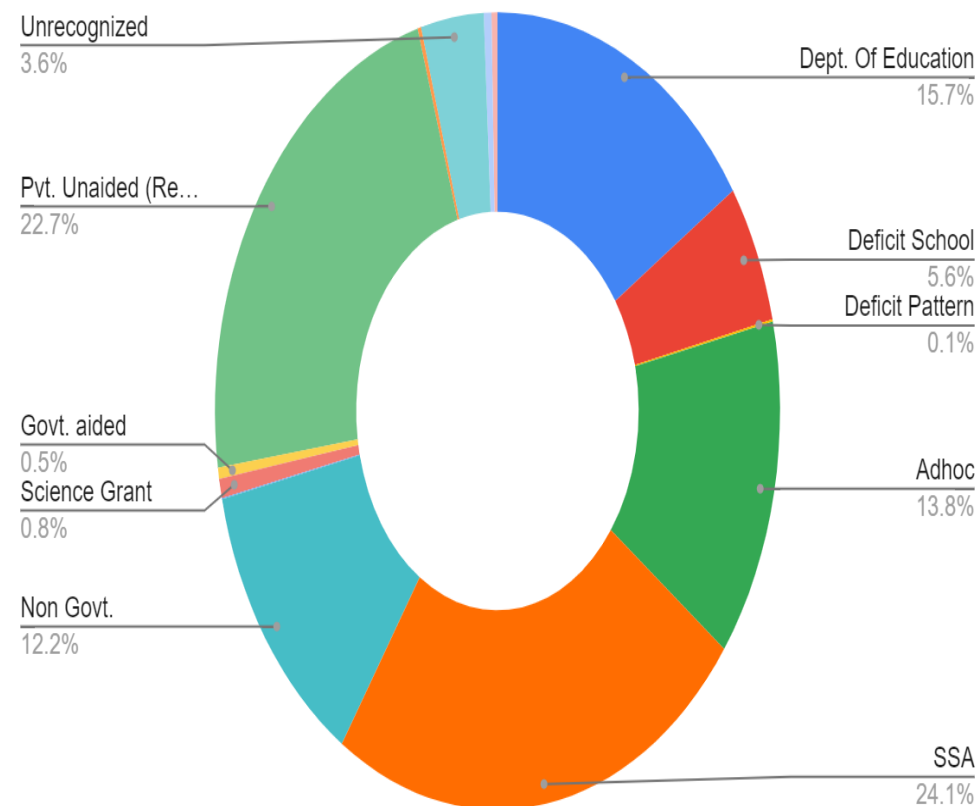


# Main Projects: 2. Teacher Capacity Building for Quality Teaching- Learning

## Distribution of Teachers

- Total Teachers – **54,636**
  - SSA Teachers – 14,892 (27.25%)
  - DOE Teachers – 7,428 (13.59%)
  - Total SSA, DOE - 22,320 (40.85%)
  - Govt. Aided Teachers - 17,443 (32%)
- Total Govt. funded Teachers – **39,801 (72.72%)**
- Private unaided Teachers – **12,209 (22.35%)**

SOURCE – UDISE 2022-23



## Percentage of Trained Teacher by level of education

**National Average:** Primary: 88.7, Upper Primary: 54.5, Secondary: 92.2, Higher Secondary: 91.8

**State Average:** Primary: 49.6, Upper Primary: 54.5, Secondary: 62.0, Higher Secondary: 55.1

# Main Projects: 2. Teacher Capacity Building for Quality Teaching - Learning



## Policy & Program level Interventions

2.1

Developing School  
Leadership – Head  
Teacher Capacity  
Building

2.2

Training Needs  
Assessment;  
Strengthening  
for Quality  
Teacher Edu. -  
✓ Pre-Service  
✓ In Service  
✓ Pre Schools

2.3

Quality support  
sys. for teachers  
– **Structured  
Pedagogy**,  
instructional  
material, lesson  
plans, classroom  
observation, etc.

2.4

Operationalize  
DERT developed  
Teachers  
Competency &  
Self-Assessment  
Framework

2.5

TIMS -  
Establishing a  
robust system of  
academic and  
administrative  
monitoring and  
evaluation

# Main Projects: 2. Teacher Capacity Building for Quality Teaching – Learning – Structured Pedagogy



## TECHNIQUES

## TOOLS

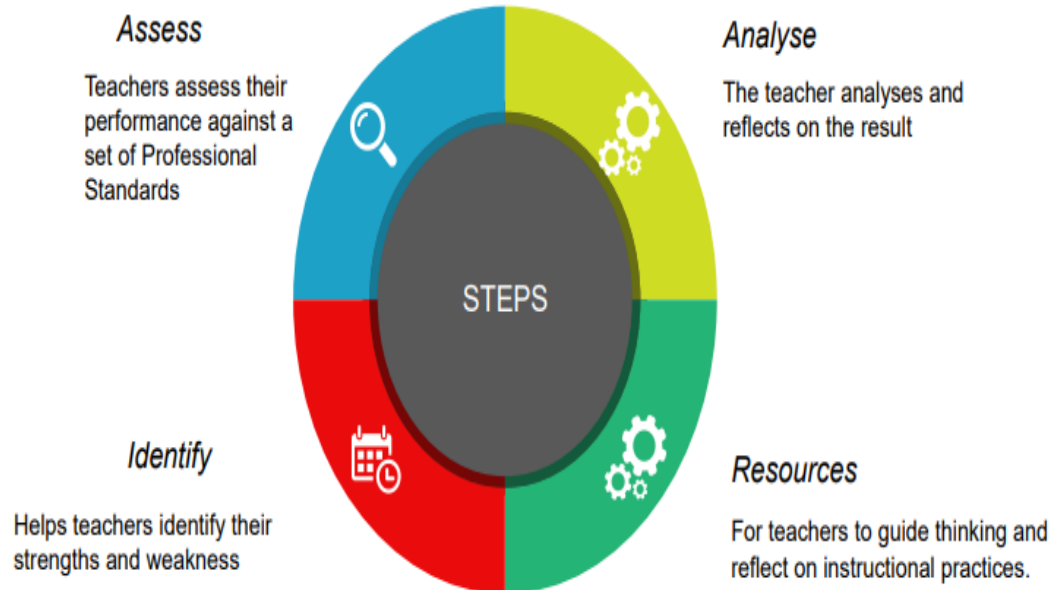
## TRAININGS

- Work with DERT
- Select Team of Teachers
- Orientation on preparation of Structured Pedagogy for Subject Teachers
- Development of Subject specific Structured Pedagogy

# Main Projects 2 – Teacher Capacity Building For Quality Teaching - Learning



## DETR - Teachers Competency & Self-Assessment Framework – Systematically Operationalize



An assessment tool which serves as a guide to teachers to self-assess



Enables reflection on daily teaching practices and role as a teacher.

TSAR – Based on 6 Performance Standards.

Set of Performance Standards – Reflect on their roles and responsibilities as teachers

- i. Designing Learning Experience
- ii. Knowledge and Understanding of Subject Matter
- iii. Strategies for facilitating Learning
  - a. A – Creating conducive learning environment
  - b. B – Learning Strategies and activities
  - c. C – Communication Skills
  - d. D – Assessments and Feedback
- iv. Interpersonal Relationships
- v. Professional Development
- vi. Social Development

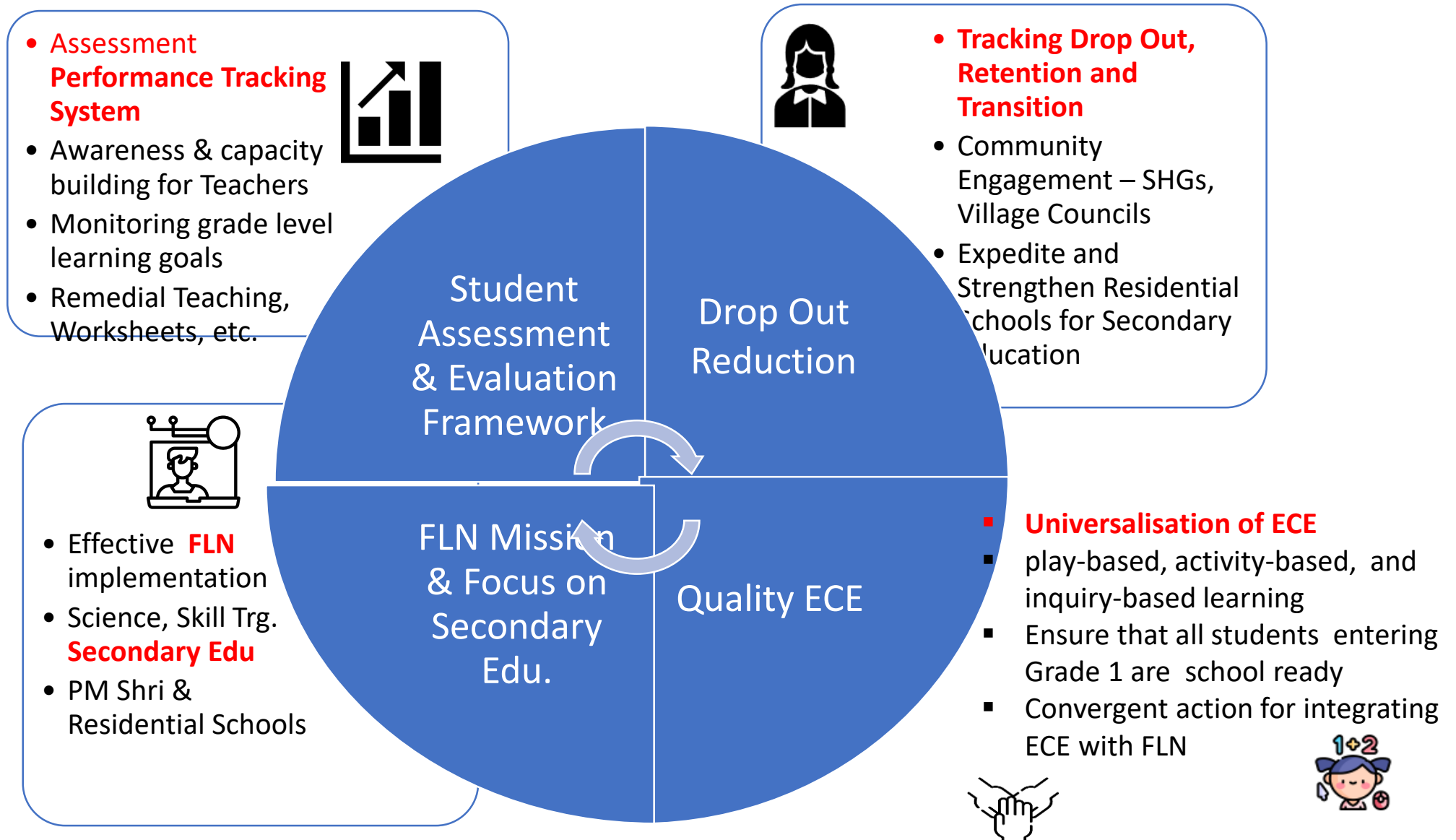
# Main Projects 3 – Student Learning Outcomes Improvement

## National Assessment Survey (NAS), 2021 - Performance

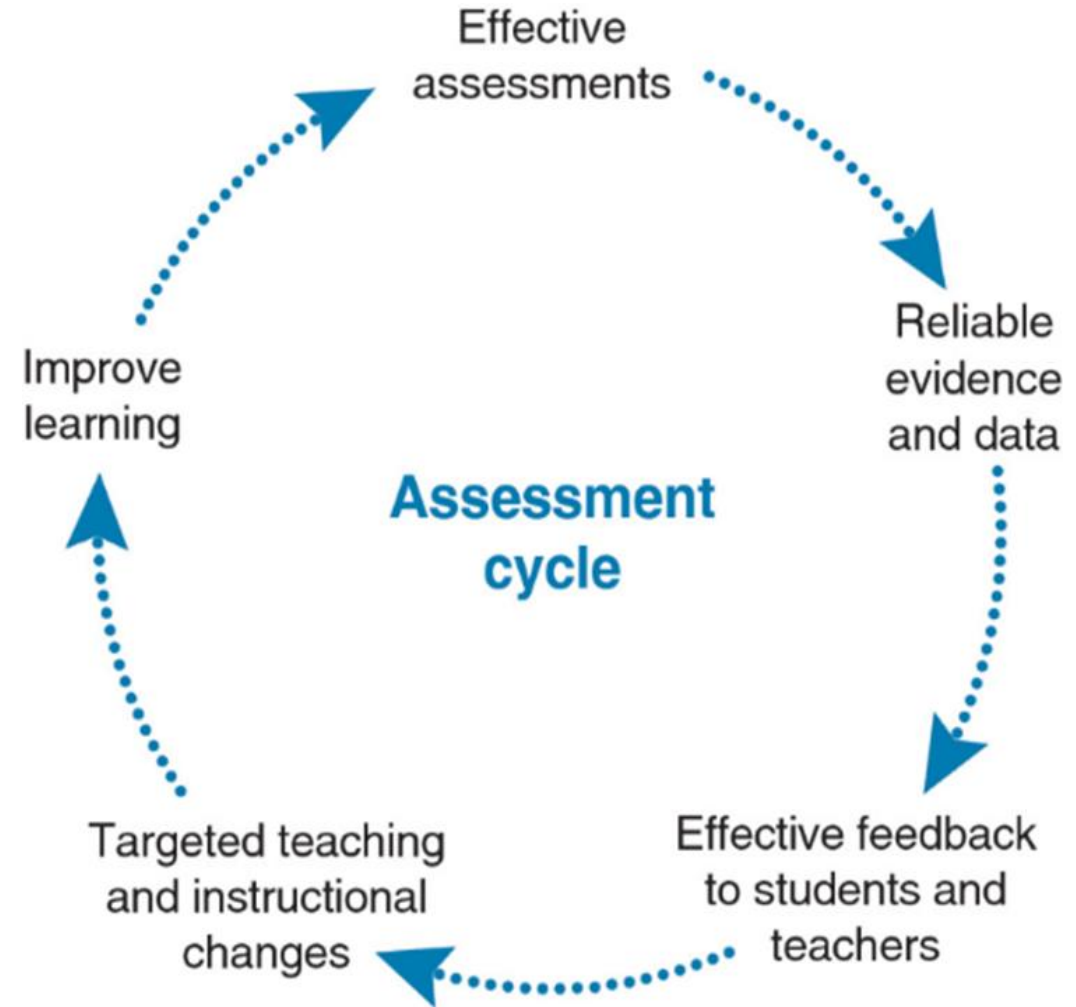
		Meghalaya Average		National Average
Class	Mean %	% of children at basic & below basic level	% of children at proficient & advance level	
Class 3	48.6	75.8	24.2	59.0
Class 5	39.9	85.3	14.7	49.0
Class 8	34.5	92.2	7.8	41.9
Class 10	32.5	84.0	16.0	37.8

# Main Projects - 3. Student Learning Outcomes Improvement

## Putting Students at the Centre



- ✓ Student Assessments
  - Formative Assessments
  - Summative Assessments
  - State Level Assessment Survey
  - National Assessment Survey
- ✓ Online Assessment Performance Tracking System
  - Data Repository
  - Data Collection
  - Dash Boards
  - Analytics
  - Remediation
- ✓ Awareness and Capacity Building to Teachers
- ✓ Monitoring assessment driven teaching-learning practices
- ✓ Align with PARAKH – National Assessment Centre prioritised by NEP 2020



## Formative Assessments - Census

Helps students to learn and practise

When

Throughout the course

Why

Identify gaps and improve learning

## Summative Assessments - Census

Assess student performance

When

At the end of instruction period – Quarterly, 1/2rly

Why

Collect evidence of student knowledge or skills & track

- ✓ State Assessment Survey (SAS) – Annually, Sample
- ✓ National Assessment Survey (NAS) – Bi annually, Sample



# To Summarize -

## NEP 2020: Implementation for Transformative Impact

01



National Mission on Foundational Literacy & Numeracy (FLN)



02



Universalization of Early Childhood Care and Education (ECCE)



03



Align with National Assessment Centre - PARAKH



04



SAS - Key Stage Exams in Grades 3, 5, and 8



05



Continuous Professional Development of Teachers

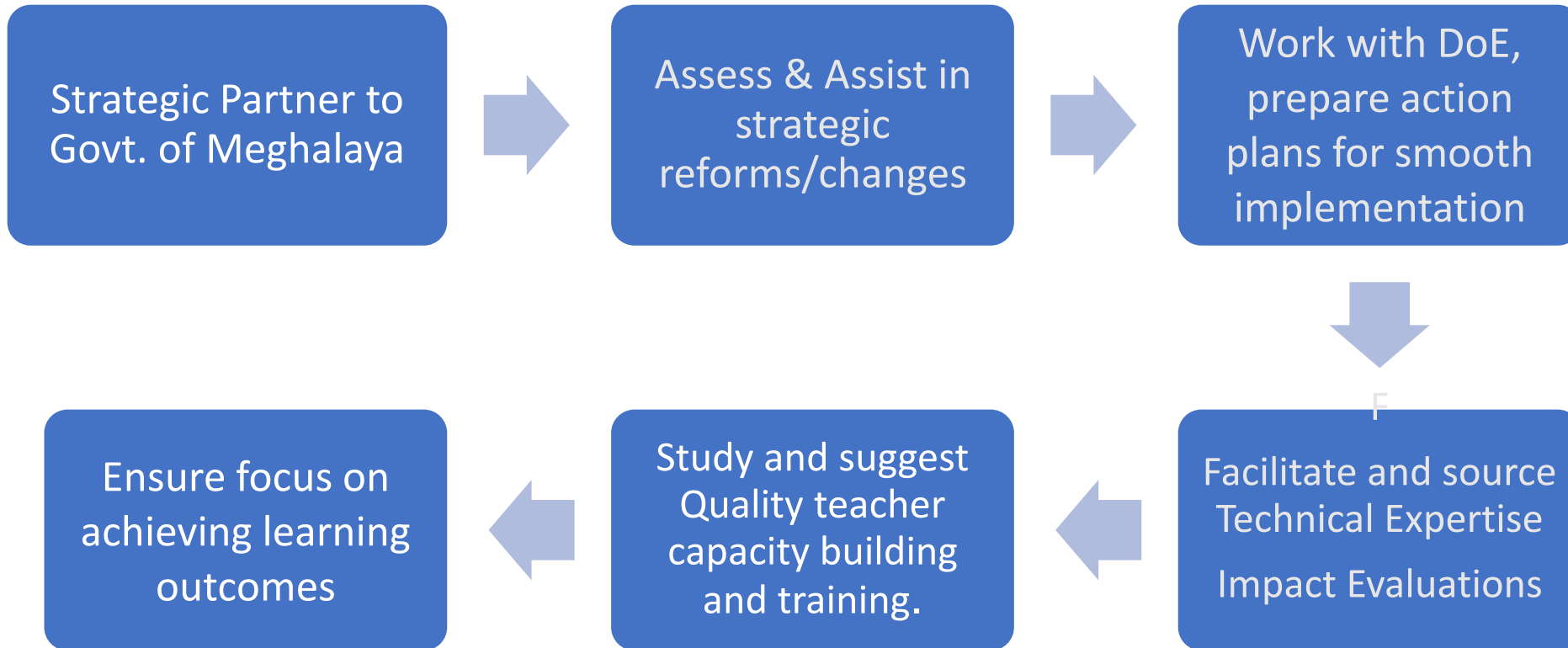


06



Technology enabled Data Systems for decision making & quality enhancement

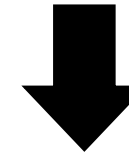




## Timeline for Implementation

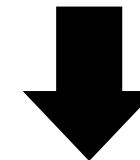
2023-2024

**Action Plans for Institutional Strengthening to deliver Transformative & quality of School Education and putting systems in place**



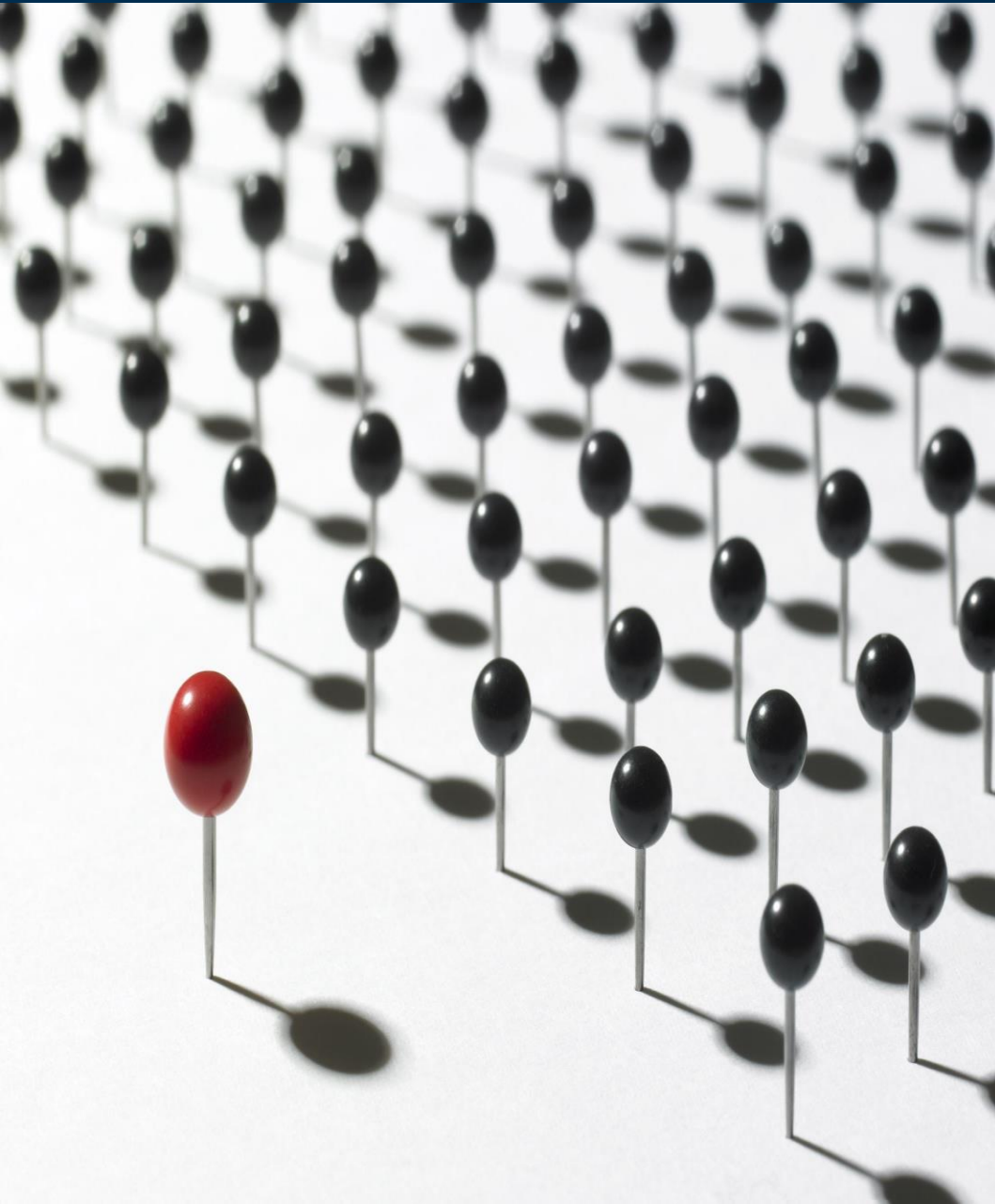
2024-2025

**Operationalizing Plans, expanding & capacity building effective implementation at scale**



2025-2026

**Consolidation, mid course corrections, Impact Evaluations**





# Govt. of Meghalaya support needed

---

- Finalise the Timelines
- Approve the Action Plans
- Interface in DoE & SMS for implementing the Action Plans
- Facilitating field work
- Quarterly monitoring mechanism at highest level



*Thank you!*

---

# CRISP Action Plan with Govt. of MEGHALAYA

**CRISP**  
Deliberate. Design. Deliver.

Centre for Research in  
Schemes and Policies

Facilitating Rural Development 3.0

# MAIN PROJECTS in the Action Plan



**Self Help Groups**



**Village Organisations**



**SHG Bank linkage**



**SHG livelihood**



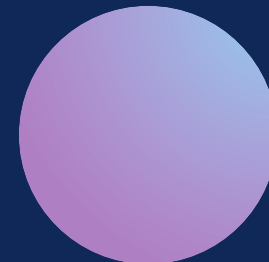
**SHG Natural Farming**



**SHG for SDGs**



**Cluster Level Federation**





# PROJECT 1: STUDY OF SHGs



---

**Objective:** To improve and strengthen SHGs through a **study on Self Help Groups (SHGs)** in Meghalaya



# SELF-HELP GROUPS

Survey	Identification	Action Plan	Implementation	Monitoring
Conduct a study on SHGs in Meghalaya via SRLM database and field visits	Selection of SHGs from the study which requires support	Develop training module to strengthen weak SHGs	Integrate Action Plan into MSRLS agenda for trainings and capacity building	<ul style="list-style-type: none"><li>➤ Trimonthly</li><li>➤ Quarterly</li><li>➤ Annual assessment</li></ul>

# TIMELINE

Sl. No.	Activities	April	May	June	July	Aug	Sept
1.	Analysis of SHG functioning based on SRLM database						
2.	Conduct of survey of all SHGs using a Google survey + field visits						
	Health Grading Exercise of all SHGs to be conducted by VOs						
3.	Identifying SHGs which need support						
4.	Finalising the strategy for strengthening the weak SHGs - finalisation						
5.	Identifying and preparing the CRPs for the strengthening project by MBK						
6.	Preparing the training modules for the weak SHGs						
7.	Monitoring system for progress on strengthening						

# PROJECT 2: STRENGTHENING VILLAGE ORGANISATIONS (VOs)

---

**Objective:** To develop Village Organisations (VOs) as Non-Banking Financial Companies (NBFC)



# VILLAGE ORGANISATION

Survey	Research	Grading	Training
<ul style="list-style-type: none"><li>➤ Conduct a study on Village Organisations (VOs)</li><li>➤ Map idle funds with VOs</li></ul>	Secondary Research on successful NBFC models of Stree Nidhi	Based on the study conducted, categorize VOs into A, B & C based on their performance (ranking matrix for grading needs to be developed)	<ul style="list-style-type: none"><li>➤ Facilitate trainings, capacity building workshops and exposure visits for selected VOs</li><li>➤ Training of Internal Community Resource Person (iCRP)</li></ul>

# Contd.

## Model VOs

Post trainings,  
establishment of  
model blocks across  
all districts of  
Meghalaya

## Operationalize

Initiate functionality  
of NBFCs

## Monitoring

- Monthly
- Quarterly
- Annual

## Evaluation

Re-evaluation of  
eligible VOs using  
the grading system  
to increase the  
number of VOs as  
NBFCs

# TIMELINE

Sl. No.	Activities	April	May	June	July	Aug	Sept
1.	Survey of the status of the VOs						
	Linkage of SHGs into VO (100% saturation)						
2.	Categorisation of VOs in to A-B-C						
3.	Strategy for strengthening B and C categories						
4.	Consolidating the A category VOs into a NBFC ( <u>Stree Nidhi</u> model)						
5.	Formation and functionality of the NBFC						
	Mapping of Idle Funds with VOs						





## PROJECT 3: SHG access to Credit

---

**Objective:** To strengthen the SHG bank linkage in Meghalaya

# SHG access to credit

Status Report	SLBC convenor	Action Plan	Adoption	Monitoring
Prepare a status report on poor bank linkage via field visits, interaction with SHGs, VOs, Bank officials, MSRLS team	Post development of report on SHG bank linkage, meet convenor of State Level Bankers Committee (SLBC) to find solutions for the problems	<ul style="list-style-type: none"><li>➤ Based on the discussion with SLBC convenor, derive an Action Plan to address the challenges for SHG bank linkage</li><li>➤ Develop strategy to strengthen outreach of Bank Mitras</li></ul>	Present the Action Plan/ recommendations for addressing Bank linkage challenges to be adopted in SLBC meeting	Bi-monthly Quarterly Annual



# TIMELINE

Sl. No.	Activities	April	May	June	July	Aug	Sept
1.	Field visits to the select SHGs to identify problems						
2.	Preparing a status note on difficulties in poor bank linkage						
3.	Meeting with SLBC convenor to find solutions						
4.	Action plan for strengthening the outreach of Banks (Bank Mitras)						
5.	Action Plan for better credit score for SHGs						
6.	Adoption of the plan in SLBC meeting						
7.	Monitoring the progress						
	Social Security for SHG members (Rights & Entitlement)						

# PROJECT 4: SHG Livelihoods

---

**Objective:** To enable 1000 SHGs to set up sustainable livelihood activities.



# SHG Livelihoods

Identification	Livelihood Plans	Training	Bank Finance	Monitoring
Based on the surveys carried out for SHGs, 1000 SHGs will be selected	Plans & Programs need to be curated with local needs, opportunities & resource availability	Capacity building trainings for Community Resource Persons (CRPs) on entrepreneurship support	Support through VO & Bank loans	Tri-monthly Quarterly Annual

# TIMELINE

Sl. No.	Activities	April	May	June	July	Aug	Sept
1.	Identifying 1000 SHGs (better performing)						
2.	Preparing Livelihood Plans based on local needs & opportunities						
3.	CRPs to be trained for entrepreneurship support						
4.	Securing Bank Finance						
5.	Monitoring the progress						



# PROJECT 5: SHG Natural Farming

---

**Objective:** To improve nutrition and food security while contributing towards Meghalaya's climate resilience initiatives.



# Natural Farming

## Survey

Conduct a nutritional consumption study with SHGs

## Diversification

Recommend activities such as homesteads and backyard fishery in the Action Plan

## Trainings

Support MSRLS efforts and trainings for CRPs, and farmers for propagating Natural Farming

## Monitoring

Tri-monthly  
Quarterly  
Annual

# TIMELINE

Sl. No.	Activities	April	May	June	July	Aug	Sept
1.	Survey of local food security and gaps						
2.	Instruments of food security: homesteads, backyard fisheries						
3.	CRP strategy for expansion of natural farming						
4.	Training of farmers						
5.	Monitoring of progress						



# PROJECT 6: SHGs FOR SDGs

Objective: To tap the **social capital of SHGs** towards achieving **SDG** goals.





# SHGs for SDGs

Analysis	Strategy	Strategy	Monitoring
<p>Study ongoing convergences of SHGs with different state departments</p> <ul style="list-style-type: none"><li>➤ Field visits</li><li>➤ Office visits</li><li>➤ Secondary sources</li></ul>	<p>Based on the findings, curate recommendations and suggestions for strengthening SHG convergences with other departments.</p>	<p>Key focus on SHG convergence with Village Employment Council (VEC) to integrate <u>VPRP</u> of SHGs into <u>VLDP</u></p>	<p>Tri-monthly Quarterly Annual</p>

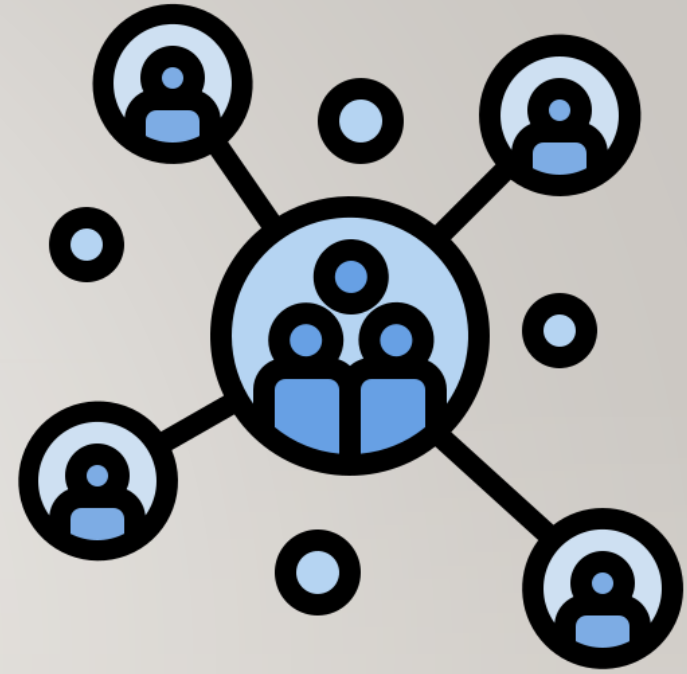
VPRP – Village Poverty Reduction Plan  
VLDP – Village Level Development Plan

# TIMELINE

Sl. No.	Activities	April	May	June	July	Aug	Sept
1.	SHG and nutrition – strategy						
2.	SHGs for better healthcare systems – strategy						
3.	SHGs for monitoring schools						
4.	SHGs against gender violence						
5.	SHG convergence with Gram Panchayats and local government						
	Integration of VPRP Plan of SHGs into VLDP						
	Social Inclusion of special category (PWD & Elderly)						

# PROJECT 7: CLUSTER LEVEL FEDERATION (CLF)

---



# CLUSTER LEVEL FEDERATION

Survey	Research	Grading	Training
<ul style="list-style-type: none"><li>➤ Conduct a study on Cluster Level Federation (CLF)</li></ul>	Secondary Research on successful NBFC models of Stree Nidhi	Based on the study conducted, categorize CLFs into A, B & C based on their performance (ranking matrix for grading needs to be developed)	<ul style="list-style-type: none"><li>➤ Facilitate trainings, capacity building workshops and exposure visits for selected CLFs</li><li>➤ Training of Internal Community Resource Person (iCRP)</li></ul>

# Contd.

## Model VOs

Post trainings,  
establishment of  
model blocks across  
all districts of  
Meghalaya

## Operationalize

Initiate functionality  
of NBFCs

## Monitoring

- Bi-monthlys
- Quarterly
- Annual

## Evaluation

Re-evaluation of  
eligible CLFs using  
the grading system  
to increase the  
number of CLFs as  
NBFCs

# TIMELINE

Sl. No.	Activities	April	May	June	July	Aug	Sept
1.	Survey of the status of the CLFs						
2.	Categorisation of CLFs in to A-B-C						
3.	Strategy for strengthening B and C categories						
4.	Consolidating the A category CLFs into a NBFC (Stree Nidhi model)						
5.	Formation and functionality of the NBFC						

# EXPECTED OUTCOMES



## SELF-HELP GROUPS

Improved activities of SHGs in savings, access to credit, and livelihood



## VILLAGE ORGANISATION

VOs will be transformed as NBFCs in Meghalaya



## SHG BANK LINKAGE

The number of bank linkage will increase to more than 25,000 SHGs



## SHG LIVELIHOOD

Income level of 500 SHGs will increase with more livelihood opportunities



## SHG NATURAL FARMING

Natural Farming will be practiced in all 12 districts of Meghalaya addressing Nutrition & Food security



# EXPECTED OUTCOMES



## SHGs FOR SDGs

SHGs convergence  
with state  
departments will  
increase



## CLUSTER LEVEL FEDERATION

CLFs will be  
transformed as  
NBFCs in Meghalaya



**THANK**  

---

**YOU**